

CONSTRUCTION NOTES

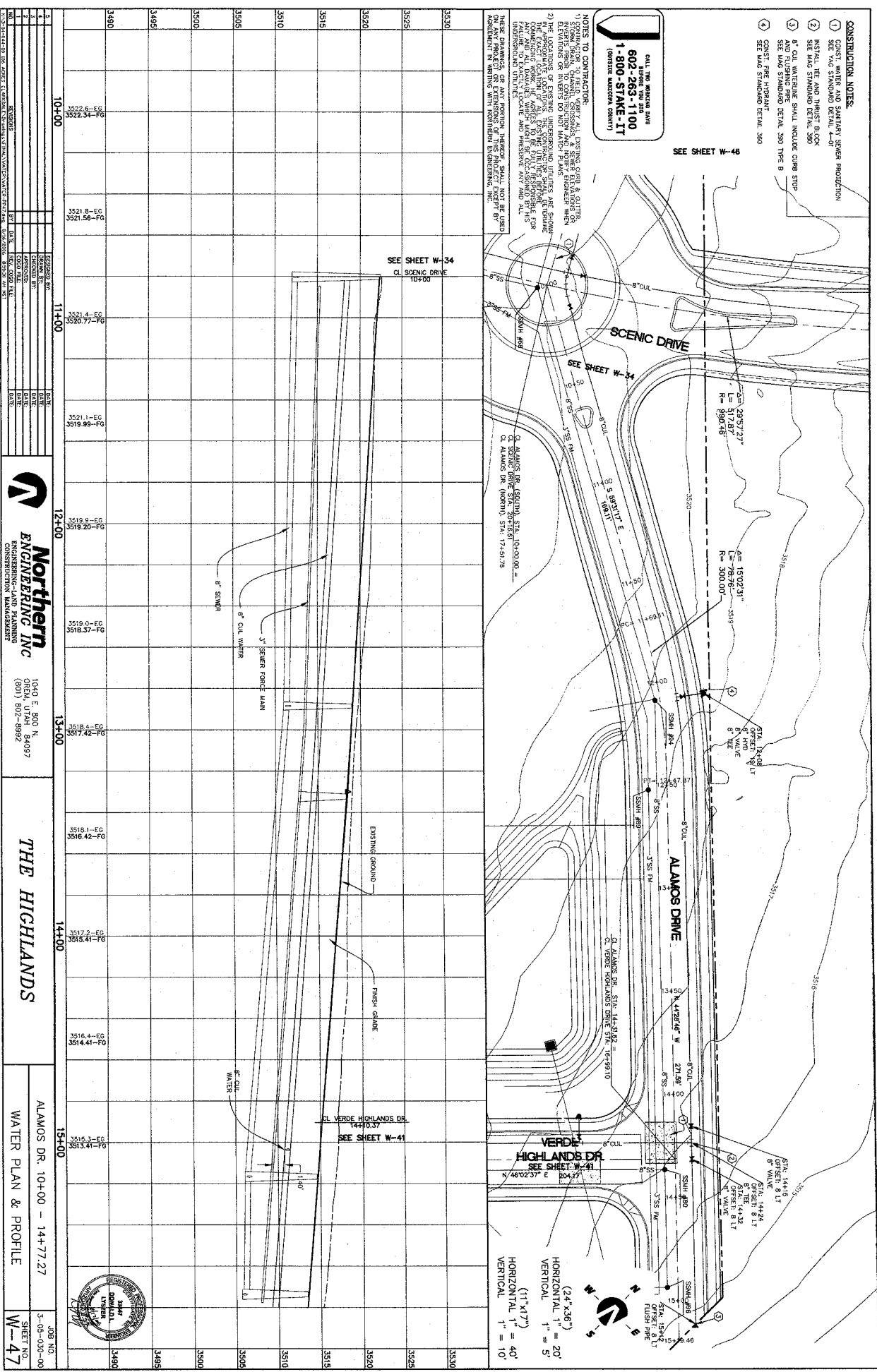
- 1) CONST. WATER AND SANITARY SCREEN PROTECTION
- 2) SEE YAG STANDARD DETAIL 4-01
- 3) INSTALL TE AND THROST BLOCK SEE YAG STANDARD DETAIL 3-00
- 4) 8" CUL WATERLINE SHALL INCLUDE CURB STOP SEE YAG STANDARD DETAIL 3-00 TYPE B
- 5) CONST. FIRE HYDRANT SEE YAG STANDARD DETAIL 3-00

CALL THE WORKING DATE
602-263-1100
1-800-STAKE-IT
 (Outside Western County)

NOTES TO CONTRACTOR

- 1) CONSULTOR OR FIELD ENGINEER, SURVEYOR, ENGINEER, ARCHITECT, ELEC. ENGINEER OR OTHER PROFESSIONAL ENGINEER SHALL BE RESPONSIBLE FOR VERIFYING THE LOCATION OF ALL UTILITIES AND RECORDING THE LOCATION OF ALL UTILITIES ON THE DRAWING.
- 2) IN ASSUMING THE LOCATION OF UTILITIES, THE CONTRACTOR SHALL BE RESPONSIBLE FOR VERIFYING THE LOCATION OF ALL UTILITIES ON THE DRAWING.
- 3) THE CONTRACTOR SHALL BE RESPONSIBLE FOR VERIFYING THE LOCATION OF ALL UTILITIES ON THE DRAWING.
- 4) THE CONTRACTOR SHALL BE RESPONSIBLE FOR VERIFYING THE LOCATION OF ALL UTILITIES ON THE DRAWING.

THESE DRAWINGS OR ANY PORTION THEREOF SHALL NOT BE USED FOR ANY OTHER PROJECT WITHOUT THE WRITTEN CONSENT OF THE ENGINEER. ANY REVISIONS TO THESE DRAWINGS SHALL BE MADE BY THE ENGINEER. ANY REVISIONS TO THESE DRAWINGS SHALL BE MADE BY THE ENGINEER.



(24' x 36")
 HORIZONTAL 1" = 20'
 VERTICAL 1" = 5'
 (11' x 17")
 HORIZONTAL 1" = 40'
 VERTICAL 1" = 10'

NO.	DESCRIPTION	DATE	BY	CHECKED BY	DATE
1	ISSUED FOR PERMIT	08/14/07
2	ISSUED FOR CONSTRUCTION	08/14/07
3	ISSUED FOR AS-BUILT	08/14/07

Northern
 ENGINEERING-LAND PLANNING
 CONSTRUCTION MANAGEMENT

1040 E. 800 N.
 OREM, UTAH 84097
 (801) 802-6992

THE HIGHLANDS

ALAMOS DR. 10+00 - 14+77.27
 WATER PLAN & PROFILE

JOB NO. 3-03-030-00
 SHEET NO. W-47

