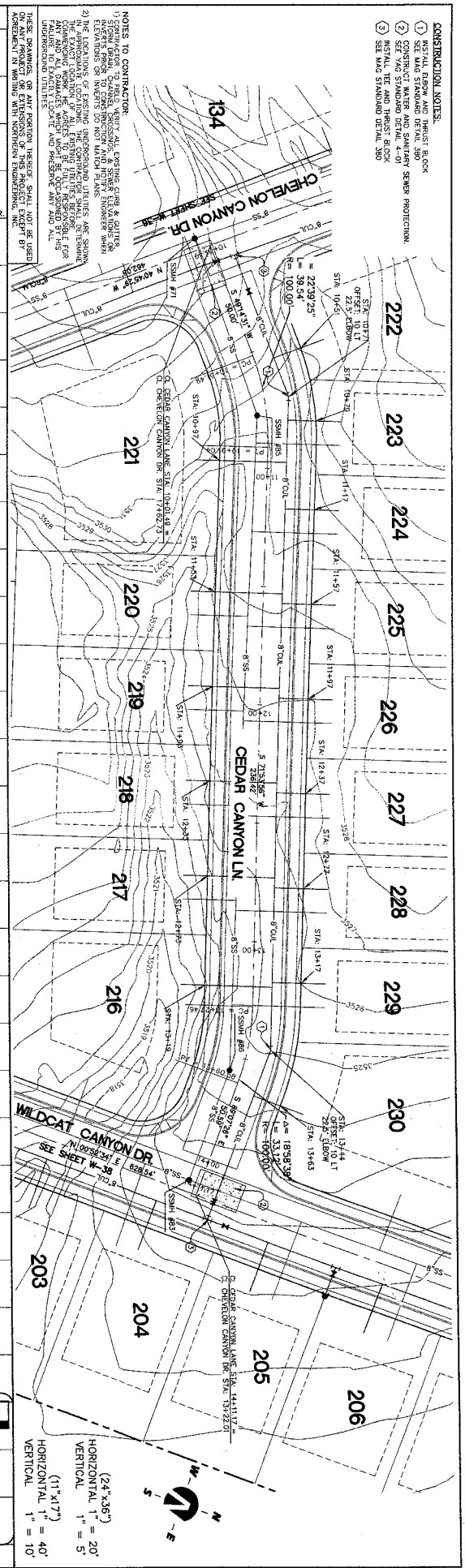
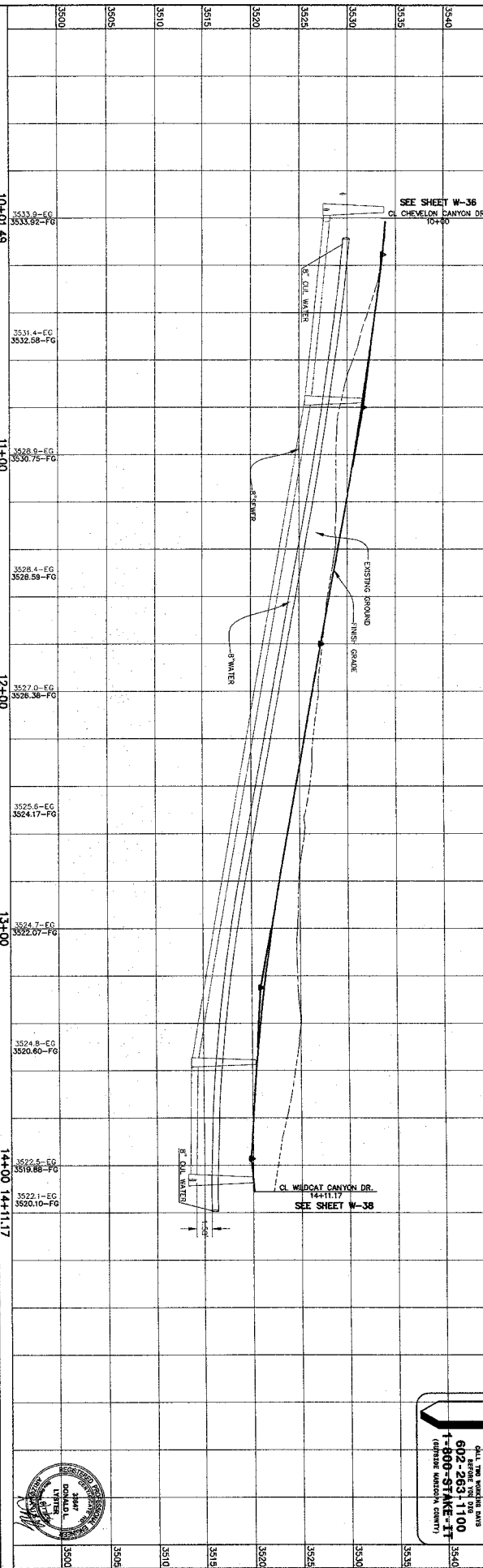


- CONSTRUCTION NOTES:**
- 1) INSTALL FLOW AND THURST BLOCK
 - 2) SEE MAP STANDARD DETAIL 380 - 10' GROUND PROTECTION
 - 3) SEE MAP STANDARD DETAIL 380 - 10' GROUND PROTECTION
 - 4) SEE MAP STANDARD DETAIL 380 - 10' GROUND PROTECTION



NOTES TO CONTRACTOR:

- 1) CONTRACTOR TO FIELD VERIFY ALL EXISTING UTILITIES AND QUALITIES. CONTRACTOR TO VERIFY ALL EXISTING UTILITIES AND QUALITIES. CONTRACTOR TO VERIFY ALL EXISTING UTILITIES AND QUALITIES.
- 2) THE LOCATIONS OF EXISTING UNDERGROUND UTILITIES ARE SHOWN IN APPROXIMATE LOCATIONS. THE CONTRACTOR SHALL BE RESPONSIBLE FOR VERIFYING THE EXISTENCE AND DEPTHS OF ALL UTILITIES. CONTRACTOR SHALL BE RESPONSIBLE FOR VERIFYING THE EXISTENCE AND DEPTHS OF ALL UTILITIES. CONTRACTOR SHALL BE RESPONSIBLE FOR VERIFYING THE EXISTENCE AND DEPTHS OF ALL UTILITIES.



STATION	GROUND ELEVATION (FG)	PROPOSED PIPE ELEVATION (FG)
10+01.49	3533.09	3533.09
11+00	3528.90	3528.90
12+00	3528.75	3528.75
13+00	3528.59	3528.59
14+00	3528.40	3528.40
14+11.17	3528.20	3528.20

Northern ENGINEERING INC
 1040 E. 800 N.
 (801) 802-8892

THE HIGHLANDS

CEDAR CANYON LN, 10+01.49 - 14+11.17
 WATER PLAN & PROFILE
 SHEET NO. W-43

DATE: THE WORKING DATE
 6/22/2011
 1-800-STRIKE-IT
 (404) 888-8888

