

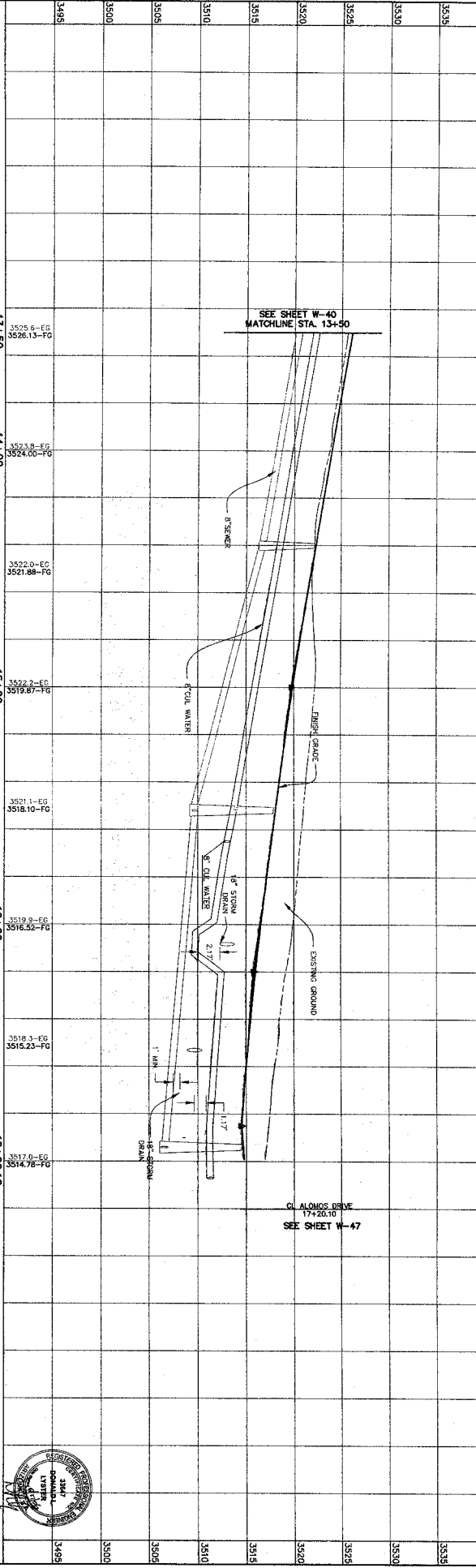
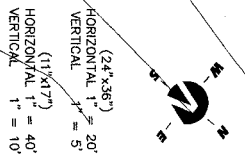
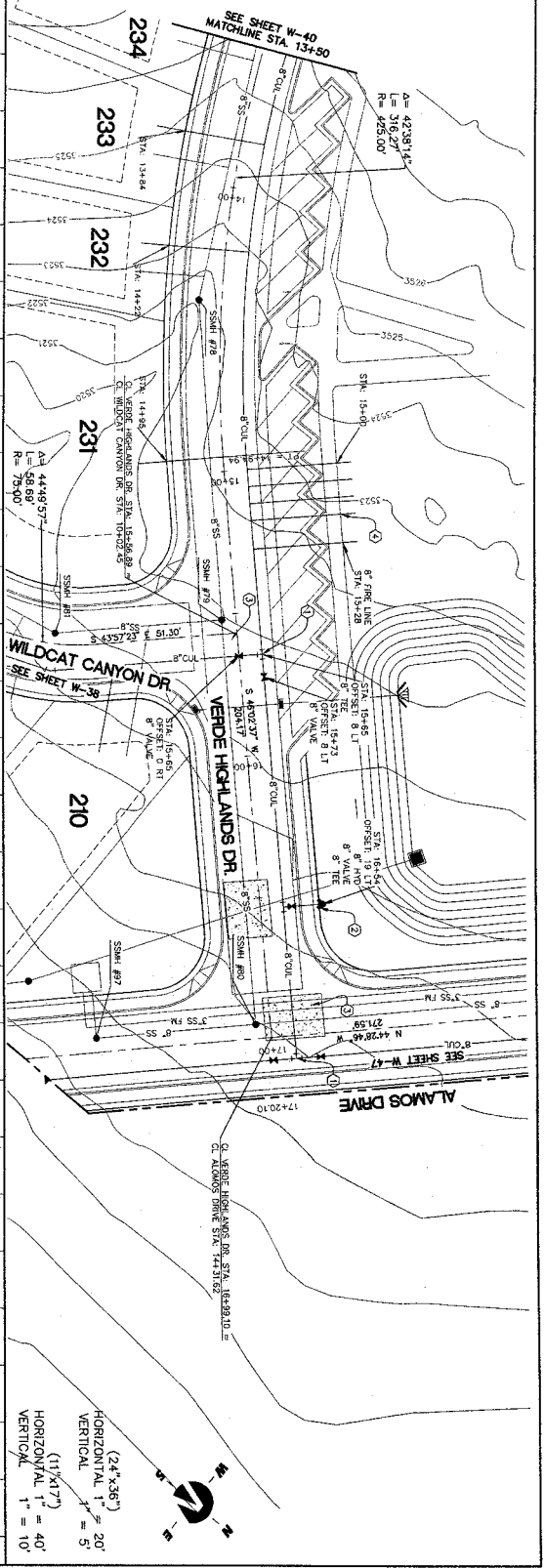
- CONSTRUCTION NOTES:**
- 1) INSTALL TE AND THINSET BLOCK
 - 2) SEE VAG STANDARD DETAIL 380
 - 3) SEE VAG STANDARD DETAIL 380
 - 4) PROVIDED BY 4" UTILITY

CALL THE WRITING DATE
602-263-1100
1-800-STAKE-17
(OUTSIDE MASONRY COUNTY)

NOTES TO CONTRACTOR:

- 1) VERIFY ALL EXISTING UTILITIES AND RECORD THEM ON THE PLAN. VERIFY ALL EXISTING UTILITIES AND RECORD THEM ON THE PLAN. VERIFY ALL EXISTING UTILITIES AND RECORD THEM ON THE PLAN.
- 2) THE LOCATION OF EXISTING UNDERGROUND UTILITIES ARE SHOWN ON THIS PLAN. VERIFY ALL EXISTING UTILITIES AND RECORD THEM ON THE PLAN. VERIFY ALL EXISTING UTILITIES AND RECORD THEM ON THE PLAN.

THESE PERMITS OR ANY PORTION THEREOF, SHALL NOT BE USED FOR ANY PROJECT OR EXTENSION OF THIS PROJECT EXCEPT BY THE ORIGINAL ISSUING AGENCY. ANY VIOLATION OF THESE PERMITS SHALL BE PENALIZED BY THE ISSUING AGENCY.



NO.	DESCRIPTION	DATE	BY	CHECKED
1	DESIGN			
2	REVISION			
3	REVISION			
4	REVISION			

N
Northern
ENGINEERING INC
 ENGINEERING-LAND PLANNING
 BUSINESS DEVELOPMENT MANAGEMENT

1040 E. 800 N.
 OREM, UT 84057
 (801) 505-8982

THE HIGHLANDS

VERDE HIGHLANDS DR. 13+50 - 17+20.10
 WATER PLAN & PROFILE
 SHEET NO. W-41

