

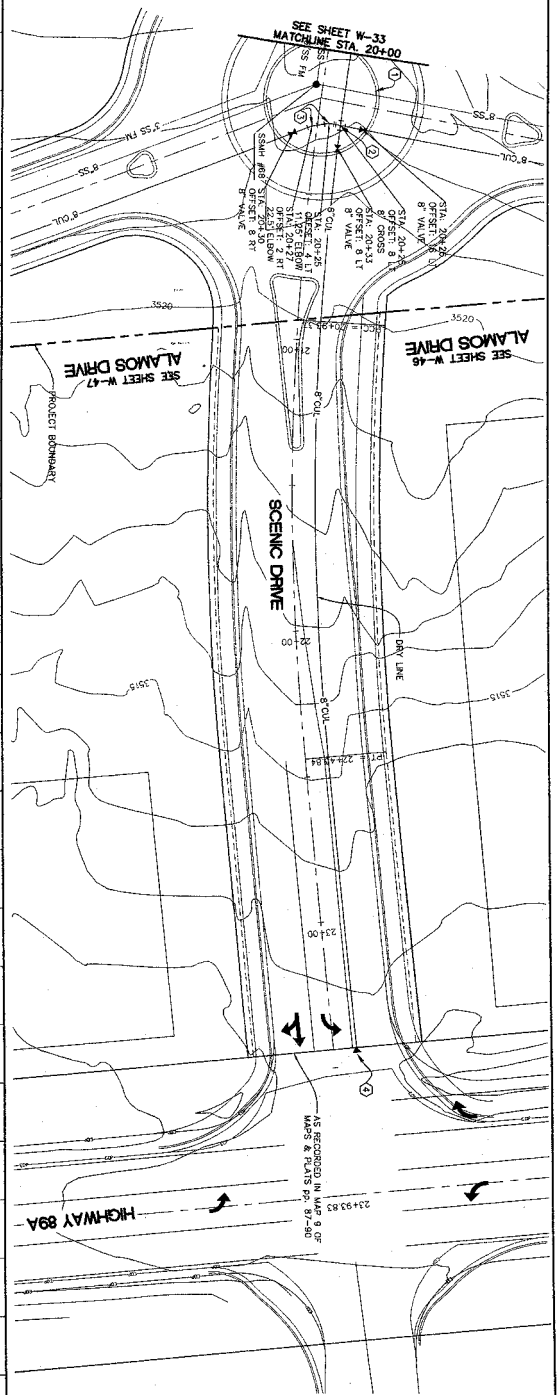
**CONSTRUCTION NOTES:**

- 1) CONST. WATER AND SANITARY SEWER PROTECTION SEE W&S STANDARD DETAIL 4-01
- 2) INSTALL CROSS AND THRUST BLOCK SEE W&S STANDARD DETAIL 380
- 3) INSTALL ELBOW AND THRUST BLOCK SEE W&S STANDARD DETAIL 380
- 4) 8" CUL WATERLINE SHALL INCLUDE CURB STOP AND 6" GUSH PIPE. SEE W&S STANDARD DETAIL 380 TYPE B

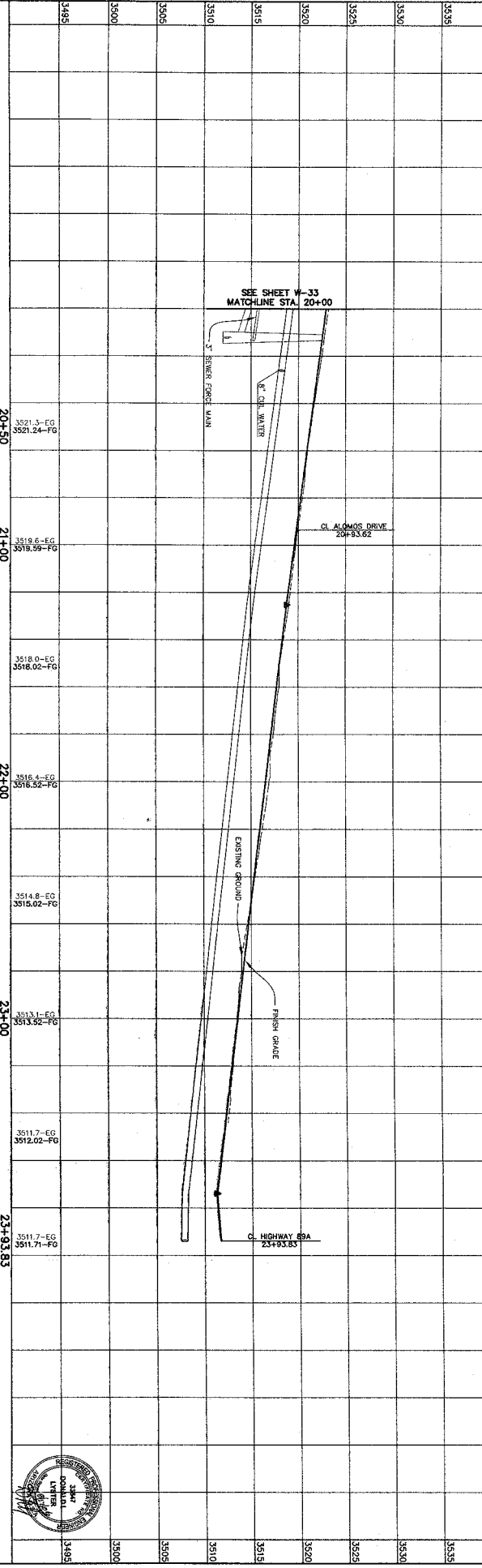
CALL THE WORKING DATES  
**602-263-1100**  
**1-800-STAKE-11**  
 (OUTSIDE ARIZONA COUNTY)

**NOTES TO CONTRACTOR:**

1) SEWER SYSTEM TO BE INSTALLED SHALL BE IN ACCORDANCE WITH THE ARIZONA DEPARTMENT OF WATER RESOURCES AND THE ARIZONA DEPARTMENT OF ENVIRONMENTAL QUALITY. THE CONTRACTOR SHALL BE RESPONSIBLE FOR OBTAINING ALL NECESSARY PERMITS FROM THE APPLICABLE AGENCIES. THE CONTRACTOR SHALL BE RESPONSIBLE FOR OBTAINING ALL NECESSARY PERMITS FROM THE APPLICABLE AGENCIES. THE CONTRACTOR SHALL BE RESPONSIBLE FOR OBTAINING ALL NECESSARY PERMITS FROM THE APPLICABLE AGENCIES.



(24"x36")  
 HORIZONTAL 1" = 20'  
 VERTICAL 1" = 5'  
 (11"x17")  
 HORIZONTAL 1" = 40'  
 VERTICAL 1" = 10'



NO.	DATE	BY	CHK	APP	DESCRIPTION
1	02/02/00	W&S	W&S	W&S	ISSUED FOR PERMITTING
2	02/02/00	W&S	W&S	W&S	ISSUED FOR PERMITTING
3	02/02/00	W&S	W&S	W&S	ISSUED FOR PERMITTING
4	02/02/00	W&S	W&S	W&S	ISSUED FOR PERMITTING
5	02/02/00	W&S	W&S	W&S	ISSUED FOR PERMITTING



**Northern Engineering Inc.**  
 ENGINEERING INC.  
 CONSTRUCTION MANAGEMENT  
 1040 E. 800 N.  
 SUITE 100  
 TUCSON, AZ 85710  
 (520) 882-8932

**THE HIGHLANDS**

SCENIC DRIVE, 20+00 - 23+93.83  
 WATER PLAN & PROFILE  
 SHEET NO. W-34

