

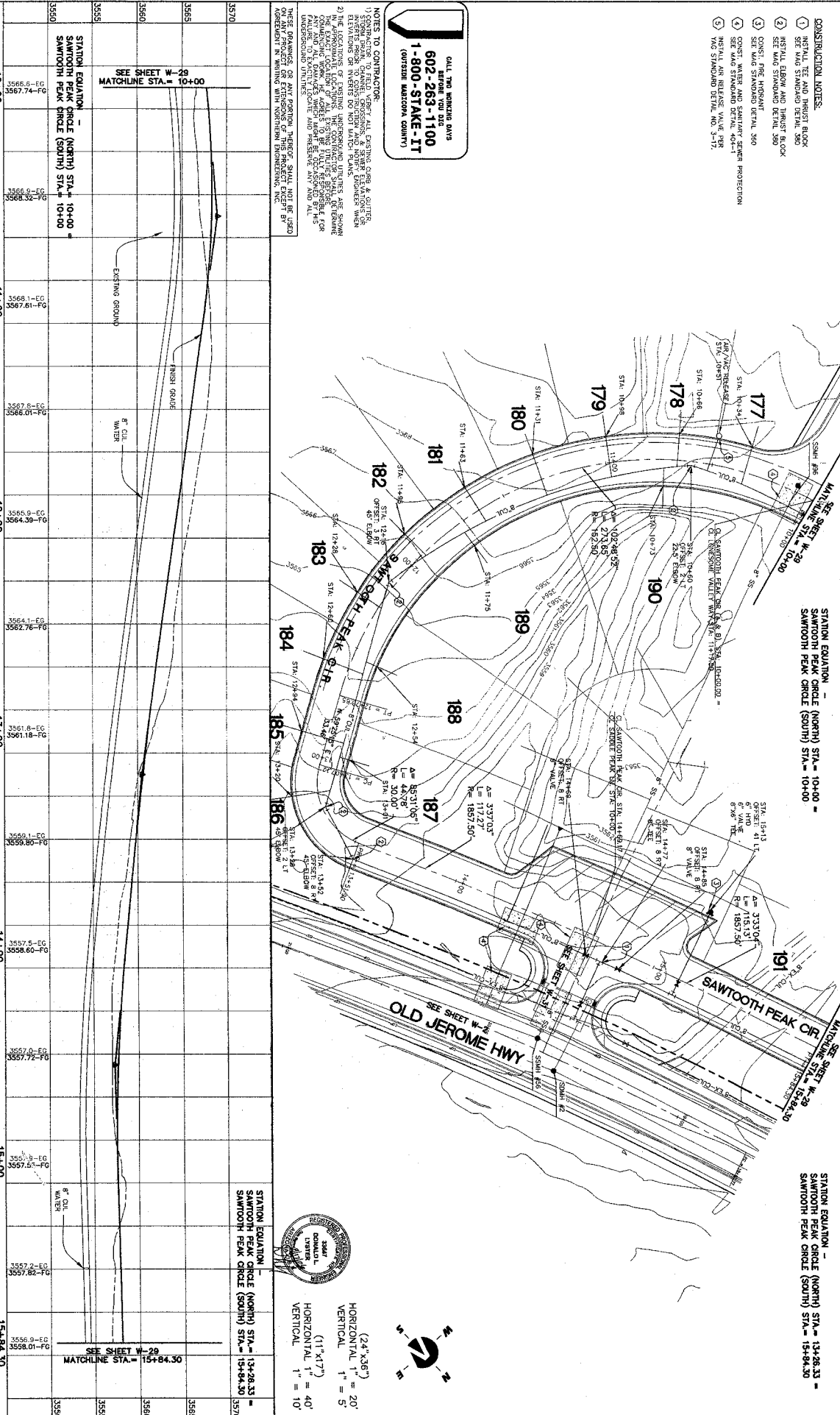
- CONSTRUCTION NOTES:**
- 1) SEE MAIN STANDARD DETAIL 800
 - 2) SEE MAIN STANDARD DETAIL 800
 - 3) CONST. FIRE HOSANT
 - 4) CONST. WATER AND SANITARY SEWER PROTECTION
 - 5) SEE MAIN STANDARD DETAIL 800
 - 6) SEE MAIN STANDARD DETAIL 800
 - 7) SEE MAIN STANDARD DETAIL 800
 - 8) SEE MAIN STANDARD DETAIL 800
 - 9) SEE MAIN STANDARD DETAIL 800
 - 10) SEE MAIN STANDARD DETAIL 800

CALL THE WORKING DAYS
602-263-1100
1-800-STAKE-IT
 (OUTSIDE MONTANA COUNTY)

NOTES TO CONTRACTOR:

- 1) CONSTRUCTION OF ALL UTILITIES SHALL BE IN ACCORDANCE WITH THE MONTANA DEPARTMENT OF TRANSPORTATION AND PUBLIC SAFETY (DTPS) STANDARD SPECIFICATIONS FOR CONSTRUCTION OF HIGHWAYS AND BRIDGES.
- 2) THE LOCATIONS OF EXISTING UTILITIES ARE SHOWN FOR INFORMATION ONLY. THE CONTRACTOR SHALL VERIFY THE EXACT LOCATION OF ALL UTILITIES BEFORE ANY CONSTRUCTION BEGINS. THE CONTRACTOR SHALL BE RESPONSIBLE FOR ANY DAMAGE TO EXISTING UTILITIES AND PRESERVE ANY AND ALL UNDERGROUND UTILITIES AND PRESERVE ANY AND ALL.

THESE DIMENSIONS OR ANY PORTION THEREOF SHALL NOT BE USED ON ANY PROJECT OR EXTENSION OF THIS PROJECT EXCEPT BY AGREEMENT IN WRITING WITH NORTHERN ENGINEERING, INC.



STATION	EG	PG	STATION	EG	PG	STATION	EG	PG
10+00	3566.8	3567.74	11+00	3568.1	3567.61	12+00	3569.5	3564.39
10+03	3566.9	3568.0	11+03	3568.2	3567.7	12+03	3569.6	3564.5
10+06	3567.0	3568.1	11+06	3568.3	3567.8	12+06	3569.7	3564.6
10+09	3567.1	3568.2	11+09	3568.4	3567.9	12+09	3569.8	3564.7
10+12	3567.2	3568.3	11+12	3568.5	3568.0	12+12	3569.9	3564.8
10+15	3567.3	3568.4	11+15	3568.6	3568.1	12+15	3570.0	3564.9
10+18	3567.4	3568.5	11+18	3568.7	3568.2	12+18	3570.1	3565.0
10+21	3567.5	3568.6	11+21	3568.8	3568.3	12+21	3570.2	3565.1
10+24	3567.6	3568.7	11+24	3568.9	3568.4	12+24	3570.3	3565.2
10+27	3567.7	3568.8	11+27	3569.0	3568.5	12+27	3570.4	3565.3
10+30	3567.8	3568.9	11+30	3569.1	3568.6	12+30	3570.5	3565.4
10+33	3567.9	3569.0	11+33	3569.2	3568.7	12+33	3570.6	3565.5
10+36	3568.0	3569.1	11+36	3569.3	3568.8	12+36	3570.7	3565.6
10+39	3568.1	3569.2	11+39	3569.4	3568.9	12+39	3570.8	3565.7
10+42	3568.2	3569.3	11+42	3569.5	3569.0	12+42	3570.9	3565.8
10+45	3568.3	3569.4	11+45	3569.6	3569.1	12+45	3571.0	3565.9
10+48	3568.4	3569.5	11+48	3569.7	3569.2	12+48	3571.1	3566.0
10+51	3568.5	3569.6	11+51	3569.8	3569.3	12+51	3571.2	3566.1
10+54	3568.6	3569.7	11+54	3569.9	3569.4	12+54	3571.3	3566.2
10+57	3568.7	3569.8	11+57	3570.0	3569.5	12+57	3571.4	3566.3
10+60	3568.8	3569.9	11+60	3570.1	3569.6	12+60	3571.5	3566.4
10+63	3568.9	3570.0	11+63	3570.2	3569.7	12+63	3571.6	3566.5
10+66	3569.0	3570.1	11+66	3570.3	3569.8	12+66	3571.7	3566.6
10+69	3569.1	3570.2	11+69	3570.4	3569.9	12+69	3571.8	3566.7
10+72	3569.2	3570.3	11+72	3570.5	3570.0	12+72	3571.9	3566.8
10+75	3569.3	3570.4	11+75	3570.6	3570.1	12+75	3572.0	3566.9
10+78	3569.4	3570.5	11+78	3570.7	3570.2	12+78	3572.1	3567.0
10+81	3569.5	3570.6	11+81	3570.8	3570.3	12+81	3572.2	3567.1
10+84	3569.6	3570.7	11+84	3570.9	3570.4	12+84	3572.3	3567.2
10+87	3569.7	3570.8	11+87	3571.0	3570.5	12+87	3572.4	3567.3
10+90	3569.8	3570.9	11+90	3571.1	3570.6	12+90	3572.5	3567.4
10+93	3569.9	3571.0	11+93	3571.2	3570.7	12+93	3572.6	3567.5
10+96	3570.0	3571.1	11+96	3571.3	3570.8	12+96	3572.7	3567.6
10+99	3570.1	3571.2	11+99	3571.4	3570.9	12+99	3572.8	3567.7
11+00	3570.2	3571.3	12+00	3571.5	3571.0	13+00	3572.9	3567.8
11+03	3570.3	3571.4	12+03	3571.6	3571.1	13+03	3573.0	3567.9
11+06	3570.4	3571.5	12+06	3571.7	3571.2	13+06	3573.1	3568.0
11+09	3570.5	3571.6	12+09	3571.8	3571.3	13+09	3573.2	3568.1
11+12	3570.6	3571.7	12+12	3571.9	3571.4	13+12	3573.3	3568.2
11+15	3570.7	3571.8	12+15	3572.0	3571.5	13+15	3573.4	3568.3
11+18	3570.8	3571.9	12+18	3572.1	3571.6	13+18	3573.5	3568.4
11+21	3570.9	3572.0	12+21	3572.2	3571.7	13+21	3573.6	3568.5
11+24	3571.0	3572.1	12+24	3572.3	3571.8	13+24	3573.7	3568.6
11+27	3571.1	3572.2	12+27	3572.4	3571.9	13+27	3573.8	3568.7
11+30	3571.2	3572.3	12+30	3572.5	3572.0	13+30	3573.9	3568.8
11+33	3571.3	3572.4	12+33	3572.6	3572.1	13+33	3574.0	3568.9
11+36	3571.4	3572.5	12+36	3572.7	3572.2	13+36	3574.1	3569.0
11+39	3571.5	3572.6	12+39	3572.8	3572.3	13+39	3574.2	3569.1
11+42	3571.6	3572.7	12+42	3572.9	3572.4	13+42	3574.3	3569.2
11+45	3571.7	3572.8	12+45	3573.0	3572.5	13+45	3574.4	3569.3
11+48	3571.8	3572.9	12+48	3573.1	3572.6	13+48	3574.5	3569.4
11+51	3571.9	3573.0	12+51	3573.2	3572.7	13+51	3574.6	3569.5
11+54	3572.0	3573.1	12+54	3573.3	3572.8	13+54	3574.7	3569.6
11+57	3572.1	3573.2	12+57	3573.4	3572.9	13+57	3574.8	3569.7
11+60	3572.2	3573.3	12+60	3573.5	3573.0	13+60	3574.9	3569.8
11+63	3572.3	3573.4	12+63	3573.6	3573.1	13+63	3575.0	3569.9
11+66	3572.4	3573.5	12+66	3573.7	3573.2	13+66	3575.1	3570.0
11+69	3572.5	3573.6	12+69	3573.8	3573.3	13+69	3575.2	3570.1
11+72	3572.6	3573.7	12+72	3573.9	3573.4	13+72	3575.3	3570.2
11+75	3572.7	3573.8	12+75	3574.0	3573.5	13+75	3575.4	3570.3
11+78	3572.8	3573.9	12+78	3574.1	3573.6	13+78	3575.5	3570.4
11+81	3572.9	3574.0	12+81	3574.2	3573.7	13+81	3575.6	3570.5
11+84	3573.0	3574.1	12+84	3574.3	3573.8	13+84	3575.7	3570.6
11+87	3573.1	3574.2	12+87	3574.4	3573.9	13+87	3575.8	3570.7
11+90	3573.2	3574.3	12+90	3574.5	3574.0	13+90	3575.9	3570.8
11+93	3573.3	3574.4	12+93	3574.6	3574.1	13+93	3576.0	3570.9
11+96	3573.4	3574.5	12+96	3574.7	3574.2	13+96	3576.1	3571.0
11+99	3573.5	3574.6	12+99	3574.8	3574.3	14+00	3576.2	3571.1
12+00	3573.6	3574.7	13+00	3574.9	3574.4	14+03	3576.3	3571.2
12+03	3573.7	3574.8	13+03	3575.0	3574.5	14+06	3576.4	3571.3
12+06	3573.8	3574.9	13+06	3575.1	3574.6	14+09	3576.5	3571.4
12+09	3573.9	3575.0	13+09	3575.2	3574.7	14+12	3576.6	3571.5
12+12	3574.0	3575.1	13+12	3575.3	3574.8	14+15	3576.7	3571.6
12+15	3574.1	3575.2	13+15	3575.4	3574.9	14+18	3576.8	3571.7
12+18	3574.2	3575.3	13+18	3575.5	3575.0	14+21	3576.9	3571.8
12+21	3574.3	3575.4	13+21	3575.6	3575.1	14+24	3577.0	3571.9
12+24	3574.4	3575.5	13+24	3575.7	3575.2	14+27	3577.1	3572.0
12+27	3574.5	3575.6	13+27	3575.8	3575.3	14+30	3577.2	3572.1
12+30	3574.6	3575.7	13+30	3575.9	3575.4	14+33	3577.3	3572.2
12+33	3574.7	3575.8	13+33	3576.0	3575.5	14+36	3577.4	3572.3
12+36	3574.8	3575.9	13+36	3576.1	3575.6	14+39	3577.5	3572.4
12+39	3574.9	3576.0	13+39	3576.2	3575.7	14+42	3577.6	3572.5
12+42	3575.0	3576.1	13+42	3576.3	3575.8	14+45	3577.7	3572.6
12+45	3575.1	3576.2	13+45	3576.4	3575.9	14+48	3577.8	3572.7
12+48	3575.2	3576.3	13+48	3576.5	3576.0	14+51	3577.9	3572.8
12+51	3575.3	3576.4	13+51	3576.6	3576.1	14+54	3578.0	3572.9
12+54	3575.4	3576.5	13+54	3576.7	3576.2	14+57	3578.1	3573.0
12+57	3575.5	3576.6	13+57	3576.8	3576.3	15+00	3578.2	3573.1
12+60	3575.6	3576.7	14+00	3576.9	3576.4	15+03	3578.3	3573.2
12+63	3575.7	3576.8	14+03	3577.0	3576.5	15+06	3578.4	3573.3
12+66	3575.8	3576.9	14+06	3577.1	3576.6	15+09	3578.5	3573.4
12+69	3575.9	3577.0	14+09	3577.2	3576.7</			