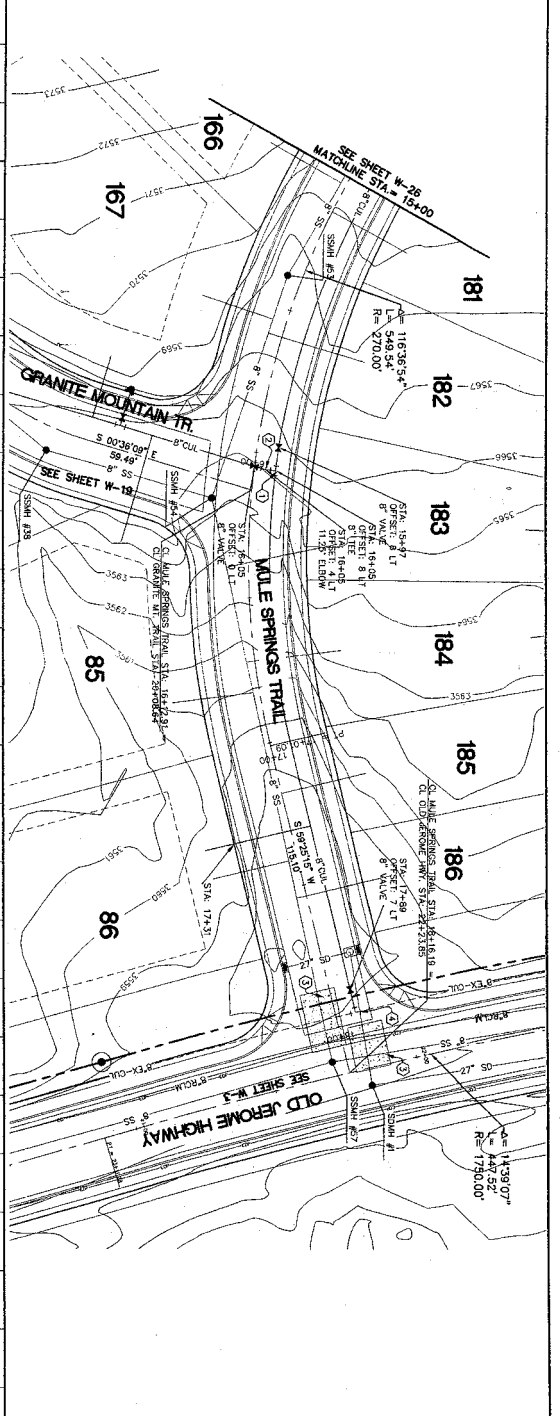


- CONSTRUCTION NOTES:**
- 1) INSTALL 18" AND THIRST BLOCK
 - 2) SEE MAG STANDARD DETAIL 380
 - 3) INSTALL ELBOW AND THIRST BLOCK
 - 4) SEE MAG STANDARD DETAIL 380
 - 5) GROUT WATER AND SANITARY EXTER PROTECTION
 - 6) SEE MAG STANDARD DETAIL 4-01
 - 7) SEE MAG STANDARD DETAIL 4-01
 - 8) SEE MAG STANDARD DETAIL 4-01
 - 9) SEE MAG STANDARD DETAIL 4-01
 - 10) SEE MAG STANDARD DETAIL 4-01

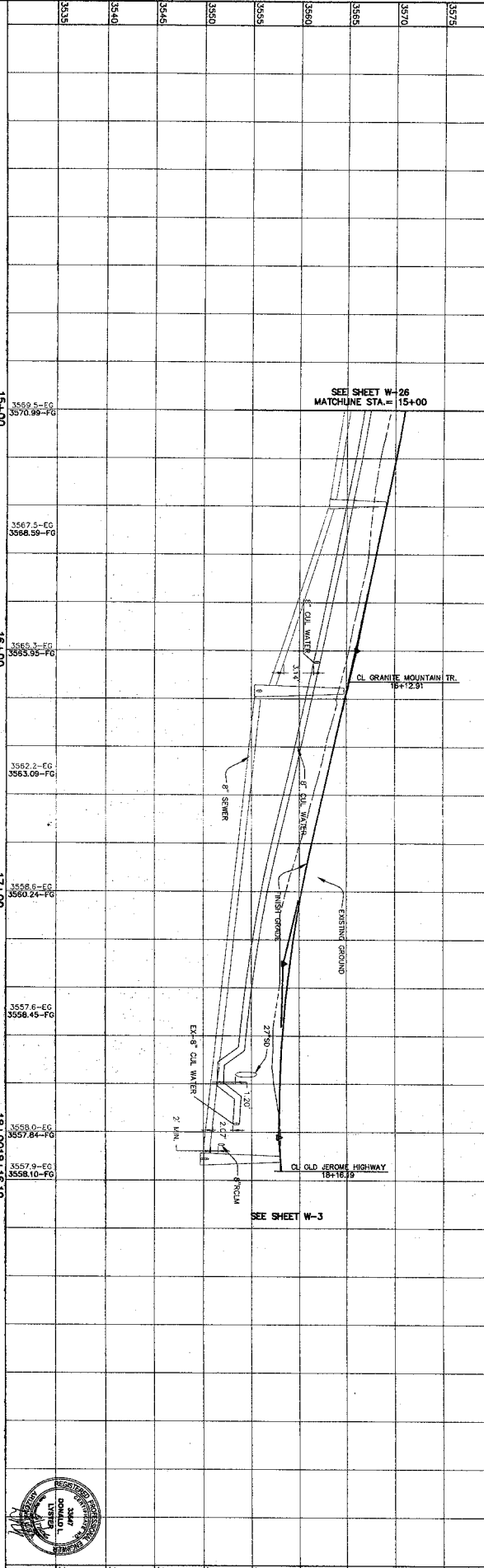
CALL THE WORKING DWS
602-263-1100
1-800-STAKE-11
 (OUTSIDE MONTICOMA COUNTY)

NOTES TO CONTRACTOR:

- 1) CONTRACTOR TO FIELD VERIFY ALL EXISTING CURB & GUTTER, EXISTING PAVEMENT, EXISTING UTILITIES AND EXISTING UTILITIES WHEN THE LOCATION OF EXISTING UNDERGROUND UTILITIES ARE SHOWN IN APPROXIMATE LOCATION. THE CONTRACTOR SHALL DETERMINE THE EXACT LOCATION OF ALL EXISTING UTILITIES. THE CONTRACTOR SHALL BE RESPONSIBLE FOR THE PROTECTION OF ALL EXISTING UTILITIES. THE CONTRACTOR SHALL BE RESPONSIBLE FOR THE PROTECTION OF ALL EXISTING UTILITIES.
- 2) THE CONTRACTOR SHALL BE RESPONSIBLE FOR THE PROTECTION OF ALL EXISTING UTILITIES. THE CONTRACTOR SHALL BE RESPONSIBLE FOR THE PROTECTION OF ALL EXISTING UTILITIES.
- 3) THE CONTRACTOR SHALL BE RESPONSIBLE FOR THE PROTECTION OF ALL EXISTING UTILITIES. THE CONTRACTOR SHALL BE RESPONSIBLE FOR THE PROTECTION OF ALL EXISTING UTILITIES.



(24" x 36")
 HORIZONTAL 1" = 20'
 VERTICAL 1" = 5'
 (11" x 17")
 HORIZONTAL 1" = 40'
 VERTICAL 1" = 10'



NO.	DESCRIPTION	DATE	BY	CHECKED	DATE	BY
1	DESIGN	10/01/19	JM	MM	10/01/19	JM
2	REVISION	10/01/19	JM	MM	10/01/19	JM
3	REVISION	10/01/19	JM	MM	10/01/19	JM
4	REVISION	10/01/19	JM	MM	10/01/19	JM
5	REVISION	10/01/19	JM	MM	10/01/19	JM

N
Northern
 ENGINEERING INC.
 1040 E. 800 N.
 OREM, UTAH 84097
 (801) 802-8992

THE HIGHLANDS

MILE SPRINGS TRAIL STA 15+00 - 18+16.19
 WATER PLAN & PROFILE
 SHEET NO. W-27