

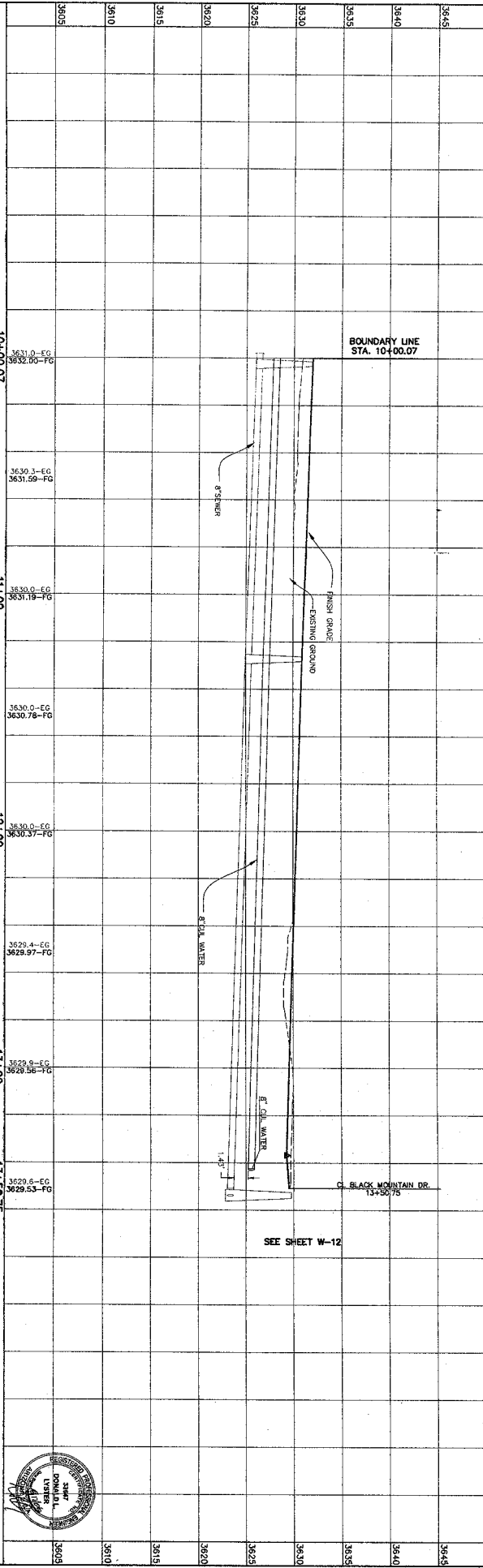
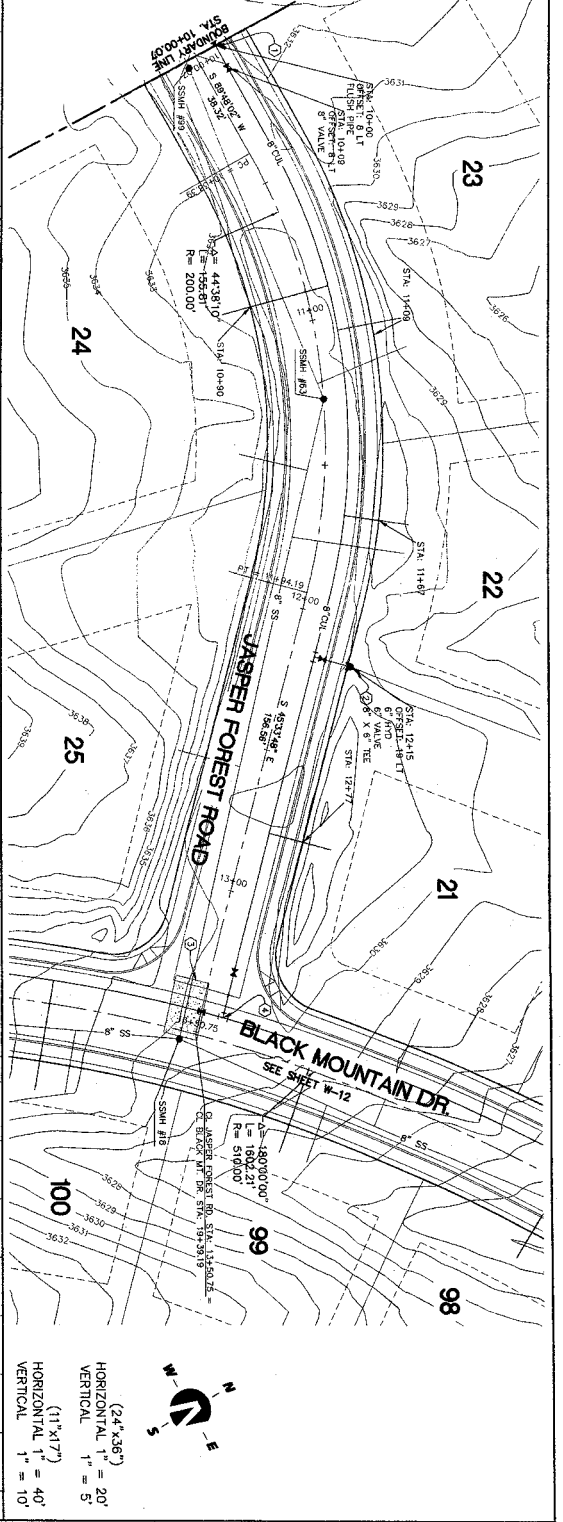
**CONSTRUCTION NOTES:**

- 1) ALL WATERBODIES SHALL INCLUDE CATCH STOPS AND FISHING PIPE DETAIL 300 TYPE B
- 2) CONCRETE FIVE HUBS
- 3) CONCRETE WATER AND SANITARY SEWER PROTECTION SEE THE STANDARD SPECIFICATIONS
- 4) SEE W-12 FOR PROPOSED ROAD

DATE: 08/20/2013  
 DRAWN BY: JASPER  
 CHECKED BY: JASPER  
 PROJECT NO.: 104-00-07  
 SHEET NO.: W-20

**NOTES TO CONTRACTOR:**

- 1) VERIFY ALL EXISTING CURB & GUTTER, STORM DRAIN, CHANNEL CROSSINGS, & SEWER RELATIONS OR ELEVATIONS OR INVERTS DO NOT MATCH PLANS.
- 2) THE LOCATIONS OF EXISTING UNDERGROUND UTILITIES ARE SHOWN BY THE EXACT LOCATION OF ALL EXISTING UTILITIES BEFORE CONSTRUCTION. ALL UTILITIES SHALL BE PROTECTED BY THE CONSTRUCTION AND PRESERVE ANY AND ALL UNDERGROUND UTILITIES.
- 3) ANY PROPOSED OR EXTENSIONS OF THIS PROJECT SHALL NOT BE USED FOR ANY OTHER PROJECTS WITHOUT THE WRITTEN CONSENT OF THE ENGINEER.



NO.	REVISIONS	DATE	BY	CHKD	APP'D
1	ISSUED FOR CONSTRUCTION	08/20/2013	JASPER	JASPER	JASPER
2	REVISED	08/20/2013	JASPER	JASPER	JASPER
3	REVISED	08/20/2013	JASPER	JASPER	JASPER
4	REVISED	08/20/2013	JASPER	JASPER	JASPER
5	REVISED	08/20/2013	JASPER	JASPER	JASPER



**Northern Engineering Inc.**  
 ENGINEERS, ARCHITECTS, PLANNERS  
 1040 E. 800 N. #4037  
 (901) 812-8892

**THE HIGHLANDS**

JASPER FOREST RD. 10+00.07 - 13+50.75  
 WATER PLAN & PROFILE  
 SHEET NO. W-20



(24" x 36")  
 HORIZONTAL 1" = 20'  
 VERTICAL 1" = 5'  
 (11" x 17")  
 HORIZONTAL 1" = 40'  
 VERTICAL 1" = 10'