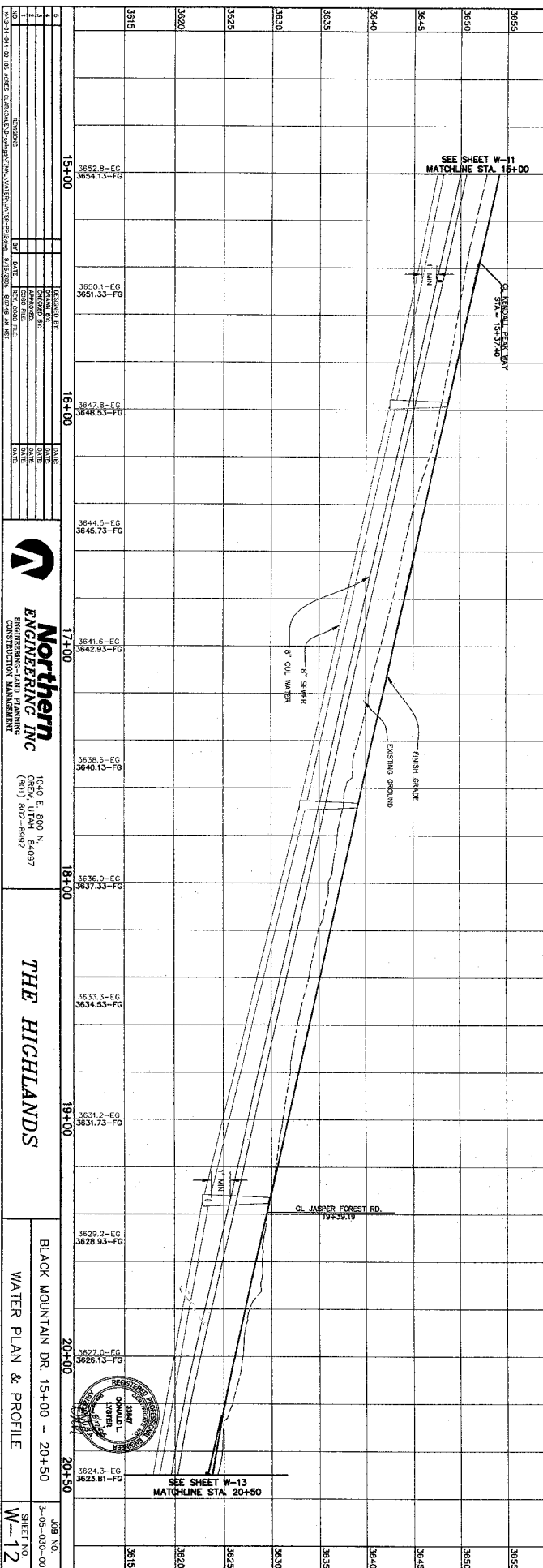
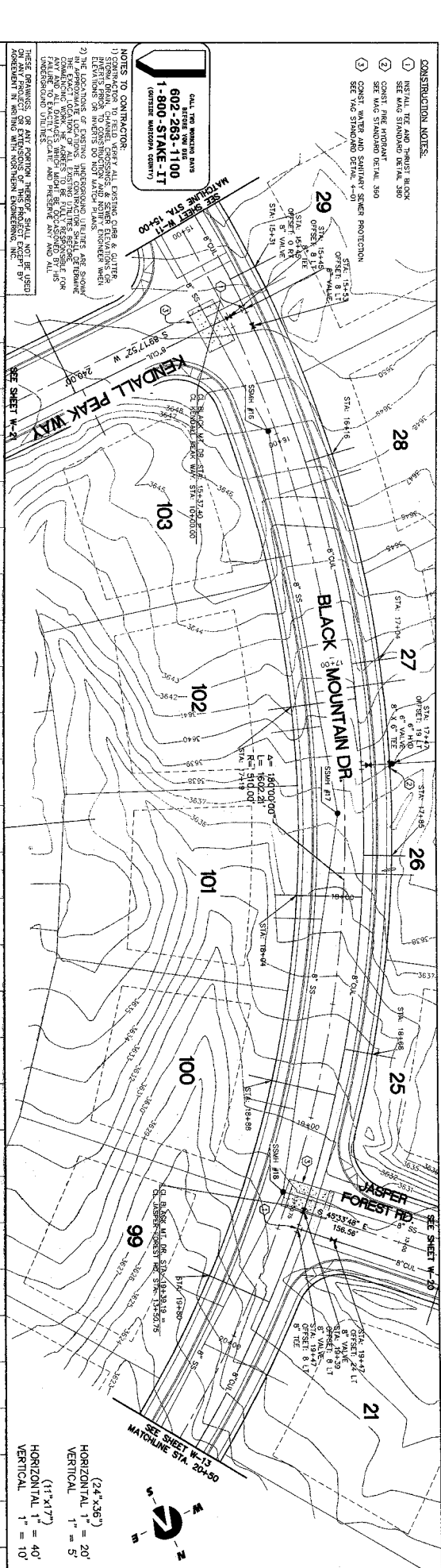


- CONSTRUCTION NOTES:**
- 1) RETAIL TIE AND THURSTER BLOCK SEE 500 STANDARD DETAIL 300
  - 2) SEE 500 STANDARD DETAIL 300
  - 3) CONCRETE WATER AND SANDFILL STIFFER PROTECTION SEE 500 STANDARD DETAIL 4-01

CALL THE NUMBER AND  
**602-283-1100**  
**1-800-STAKE-11**  
(OUTSIDE ARIZONA COUNTY)

**NOTES TO CONTRACTOR:**

- 1) CONTRACTOR TO FIELD VERIFY ALL EXISTING CURBS & GUTTERS PRIOR TO CONSTRUCTION AND NOTIFY ENGINEER WHEN ANY DISCREPANCIES ARE FOUND.
- 2) THE LOCATIONS OF EXISTING UNDERGROUND UTILITIES ARE SHOWN IN APPROXIMATE LOCATIONS. THE CONTRACTOR SHALL DETERMINE EXACT LOCATIONS OF ALL UTILITIES TO BE FULLY RESPONSIBLE FOR FAILURE TO EXCAVATE, DAMAGE AND PRESERVE ANY AND ALL UNDERGROUND UTILITIES.
- 3) THE CONTRACTOR SHALL NOT BE HELD RESPONSIBLE FOR ANY DAMAGE TO EXISTING UTILITIES OR STRUCTURES THAT OCCUR AS A RESULT OF CONSTRUCTION UNLESS SUCH DAMAGE IS CAUSED BY NEGLIGENCE OR ABRUSION IN WORKING WITH NORTHERN ENGINEERING, INC.



**Northern**  
 ENGINEERING-PLANNING  
 CONSTRUCTION MANAGEMENT

1040 E. 800 N.  
 OGDEN, UTAH 84037  
 (801) 802-6982

**THE HIGHLANDS**

BLACK MOUNTAIN DR. 15+00 - 20+50  
 WATER PLAN & PROFILE

JOB NO. 3-05-030-00  
 SHEET NO. W-12