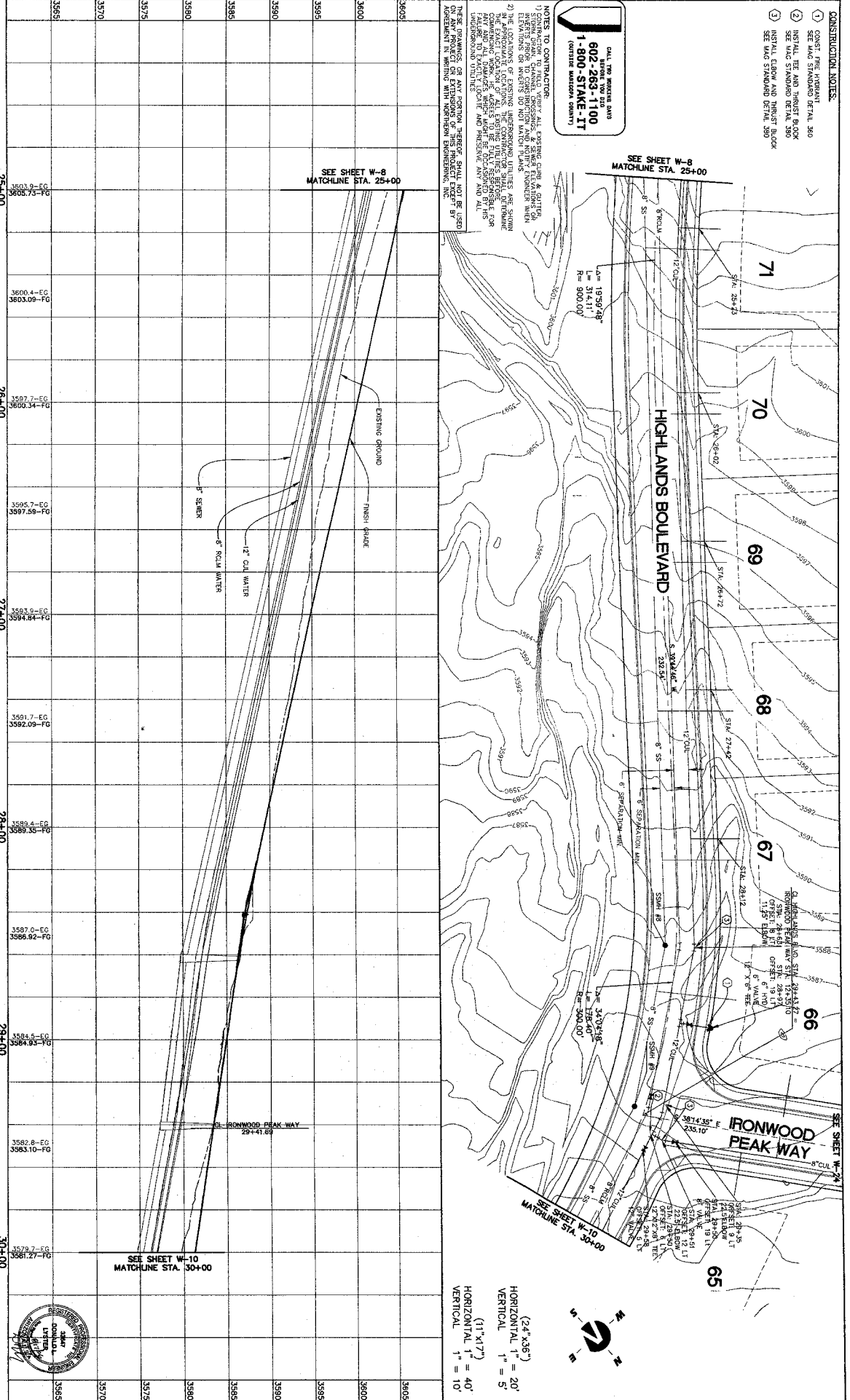


CONSTRUCTION NOTES

- 1) CONST. FIRE MANDANT SEE H&C STANDARD DETAIL 300
- 2) INST. ALL TREE AND TRIM CUT TO 4' MAX. HEIGHT
- 3) INST. ALL TREE AND TRIM CUT TO 4' MAX. HEIGHT
- 4) INST. ALL TREE AND TRIM CUT TO 4' MAX. HEIGHT
- 5) SEE H&C STANDARD DETAIL 300

CALL THE NUMBER ON
802-263-1100
1-800-STAKE-17
(OUTSIDE MISSOURI COUNTY)

NOTES TO CONTRACTOR:
 1) CONSTRUCTION OF ALL UTILITIES SHALL BE IN ACCORDANCE WITH THE MISSOURI DEPARTMENT OF TRANSPORTATION STANDARD SPECIFICATIONS FOR HIGHWAYS AND BRIDGES, LATEST EDITION.
 2) THE LOCATIONS OF EXISTING UNDERGROUND UTILITIES ARE SHOWN IN APPROXIMATE LOCATIONS. THE CONTRACTOR SHALL OBTAIN ALL NECESSARY INFORMATION FROM THE CITY OF ST. LOUIS AND THE MISSOURI DEPARTMENT OF TRANSPORTATION TO DETERMINE THE EXACT LOCATION AND DEPTH OF ALL UTILITIES.
 3) THE CONTRACTOR SHALL BE RESPONSIBLE FOR OBTAINING ALL NECESSARY PERMITS FROM THE CITY OF ST. LOUIS AND THE MISSOURI DEPARTMENT OF TRANSPORTATION.
 4) THE CONTRACTOR SHALL BE RESPONSIBLE FOR OBTAINING ALL NECESSARY PERMITS FROM THE CITY OF ST. LOUIS AND THE MISSOURI DEPARTMENT OF TRANSPORTATION.
 5) THE CONTRACTOR SHALL BE RESPONSIBLE FOR OBTAINING ALL NECESSARY PERMITS FROM THE CITY OF ST. LOUIS AND THE MISSOURI DEPARTMENT OF TRANSPORTATION.



NO.	DATE	BY	DATE	REVISIONS
1				
2				
3				
4				
5				

NO.	DATE	BY	DATE	REVISIONS
1				
2				
3				
4				
5				

Northern
ENGINEERING INC
 ENGINEERING AND PLANNING
 CONSULTING AND MANAGEMENT

1040 E. 800 N.
 OMAHA, IOWA 53403
 (515) 552-5392

THE HIGHLANDS

HIGHLANDS BLVD. 25+00 - 30+00
 WATER PLAN & PROFILE

JOB NO.
 1-05-030-00
 SHEET NO.
W-9

