

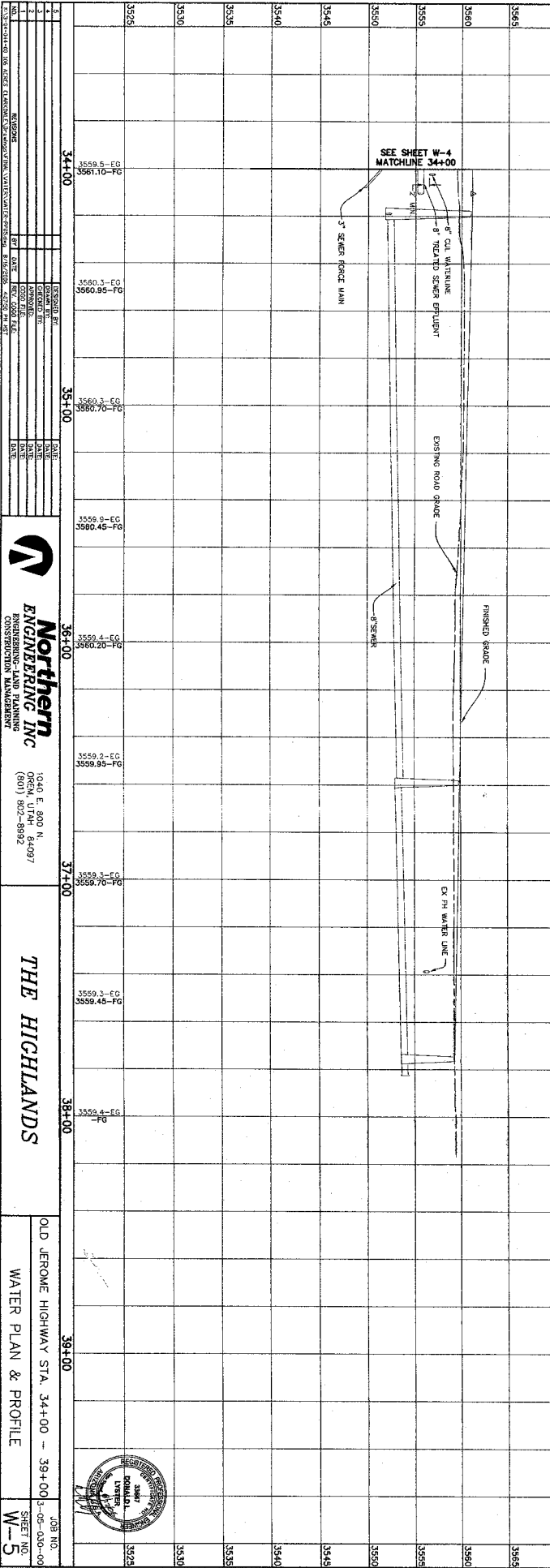
CONSTRUCTION NOTES:
 1. CONST. WATER AND SANITARY SEWER PROTECTION.
 2. SEE VAS STANDARD DETAIL 4-01
 3. INSTALL TAPPING STEPS AND VALVES
 4. SEE VAS STANDARD DETAIL 3-04

NOTES TO CONTRACTOR:
 1. VERIFY ALL EXISTING CONDUITS, MANHOLES, AND INVERTS DO NOT MATCH PLANS.
 2. THE LOCATION OF EXISTING UTILITY LINES SHALL BE CONFIRMED BY THE CONTRACTOR. THE CONTRACTOR SHALL BE RESPONSIBLE FOR VERIFYING THE LOCATION OF ALL EXISTING UTILITIES. THE CONTRACTOR SHALL BE RESPONSIBLE FOR VERIFYING THE LOCATION OF ALL EXISTING UTILITIES. THE CONTRACTOR SHALL BE RESPONSIBLE FOR VERIFYING THE LOCATION OF ALL EXISTING UTILITIES.
 THESE DRAWINGS OR ANY PORTION THEREOF SHALL NOT BE USED FOR ANY OTHER PROJECT WITHOUT THE WRITTEN CONSENT OF THE ENGINEER.
 DATE: 10/15/2010
 1-800-STAKE-IT
 (ORUTLA WAZONA COUNTY)

CALL THE MISSING DATA
 802-263-1100
 1-800-STAKE-IT
 (ORUTLA WAZONA COUNTY)



(24"x36")
 HORIZONTAL 1" = 20'
 VERTICAL 1" = 5'
 (11"x17")
 HORIZONTAL 1" = 40'
 VERTICAL 1" = 10'



NO.	DESCRIPTION	DATE
1	ISSUED FOR PERMIT	10/15/2010
2	REVISED	10/15/2010
3	REVISED	10/15/2010
4	REVISED	10/15/2010
5	REVISED	10/15/2010
6	REVISED	10/15/2010

NO.	DESCRIPTION	DATE
1	ISSUED FOR PERMIT	10/15/2010
2	REVISED	10/15/2010
3	REVISED	10/15/2010
4	REVISED	10/15/2010
5	REVISED	10/15/2010
6	REVISED	10/15/2010

NO.	DESCRIPTION	DATE
1	ISSUED FOR PERMIT	10/15/2010
2	REVISED	10/15/2010
3	REVISED	10/15/2010
4	REVISED	10/15/2010
5	REVISED	10/15/2010
6	REVISED	10/15/2010

NO.	DESCRIPTION	DATE
1	ISSUED FOR PERMIT	10/15/2010
2	REVISED	10/15/2010
3	REVISED	10/15/2010
4	REVISED	10/15/2010
5	REVISED	10/15/2010
6	REVISED	10/15/2010

NO.	DESCRIPTION	DATE
1	ISSUED FOR PERMIT	10/15/2010
2	REVISED	10/15/2010
3	REVISED	10/15/2010
4	REVISED	10/15/2010
5	REVISED	10/15/2010
6	REVISED	10/15/2010

NO.	DESCRIPTION	DATE
1	ISSUED FOR PERMIT	10/15/2010
2	REVISED	10/15/2010
3	REVISED	10/15/2010
4	REVISED	10/15/2010
5	REVISED	10/15/2010
6	REVISED	10/15/2010

NO.	DESCRIPTION	DATE
1	ISSUED FOR PERMIT	10/15/2010
2	REVISED	10/15/2010
3	REVISED	10/15/2010
4	REVISED	10/15/2010
5	REVISED	10/15/2010
6	REVISED	10/15/2010



Northern Engineering Inc.
 ENGINEERING, LAND PLANNING
 CONSTRUCTION MANAGEMENT
 1040 E. 900 N., 84097
 OREM, UTAH
 (801) 802-8892

THE HIGHLANDS

OLD JEROME HIGHWAY STA. 34+00 - 39+00
 WATER PLAN & PROFILE

JOB NO. 3525
 SHEET NO. W-5

